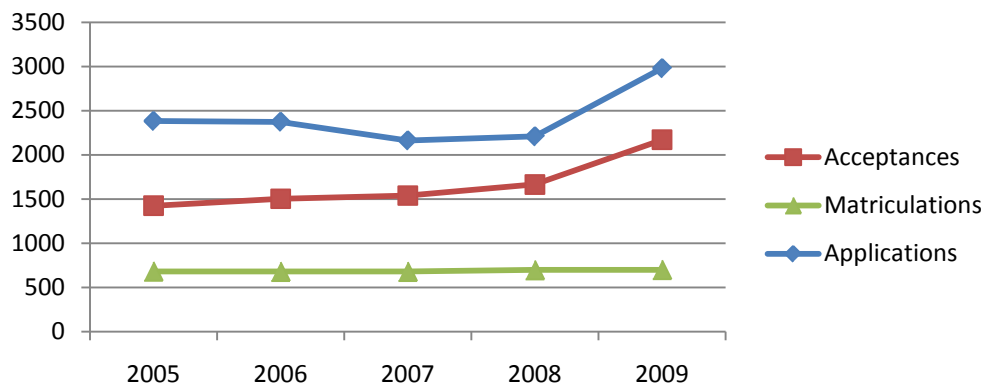




	2005	2006	2007	2008	2009
<b>Undergraduate Enrollment</b>	<b>2360</b>	<b>2383</b>	<b>2346</b>	<b>2390</b>	<b>2387</b>
Freshman	558	549	564	563	549
Sophomore	563	577	562	587	579
Junior	623	580	585	578	606
Senior	601	663	626	652	632
Special	15	14	9	10	21
Women	1419	1447	1441	1463	1475
Men	941	939	905	927	912
Full-time	2282	2310	2277	2316	2306
Part-time	78	73	69	74	81
Credit Hours	35584	36057	35413	36080	35654
FTE <sup>1</sup>	2224	2253	2213	2255	2228
<b>Undergraduate Admissions</b>					
Applications	2383	2374	2163	2209	2980
First-time Freshmen	1857	1942	1757	1810	2490
Transfers	526	432	406	399	490
Acceptances	1425	1503	1539	1665	2171
First-time Freshmen	1216	1269	1292	1411	1852
Transfers	209	234	247	254	319
Conversion Rate	60%	63%	71%	75%	73%
Matriculations	683	680	680	698	701
First-time Freshmen	563	539	530	538	535
Transfers	120	141	150	160	166
Yield Rate	48%	45%	44%	42%	32%

**Undergraduate Application and Matriculation Counts**



**Notes:**

<sup>1</sup>Undergraduate FTE is calculated by the total credit hours divided by 16.

<sup>2</sup>Classification added in Fall 2004