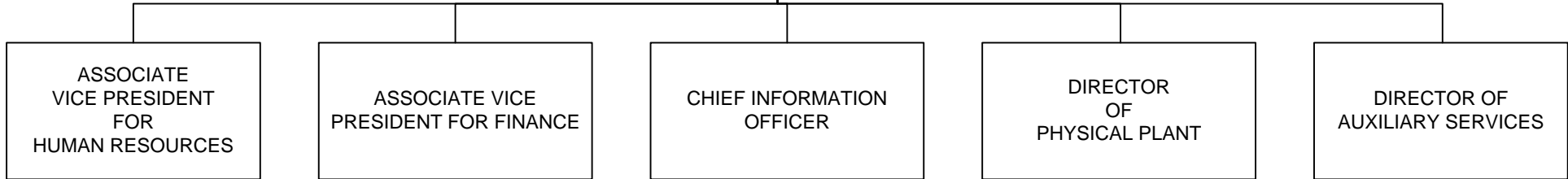


POINT LOMA NAZARENE UNIVERSITY

Administrative Structure

FINANCE & ADMINISTRATIVE SERVICES

**VICE PRESIDENT
FINANCE & ADMINISTRATIVE SERVICES
CHIEF FINANCIAL OFFICER**



- Employment
- Compensation
- Benefits/Insurance
- Employee Relations
- Training & Development
- Colony Apartments
- Worker's Compensation
- Workplace Safety
- Service Fund
- Payroll

- Accounting
- Student Financial Services
- Foundation Support
- Risk Management
- General Insurance

- Academic Computing
- Computer Hardware & Software Purchasing
- Software Development
- Database Management
- Telecommunications
- Network Services
- Help Desk
- Technology Training
- Computer Labs
- Information Systems

- Horticulture & Grounds
- Maintenance Operations
- Custodial Services
- Events and Moving Services
- Reprographics
- Mail Services
- Motor Pool Operations
- Remodel Projects
- Hazardous Waste
- Sustainability Initiatives

- Camps and Conferences
- Mail Services
- Reprographics
- Special Projects