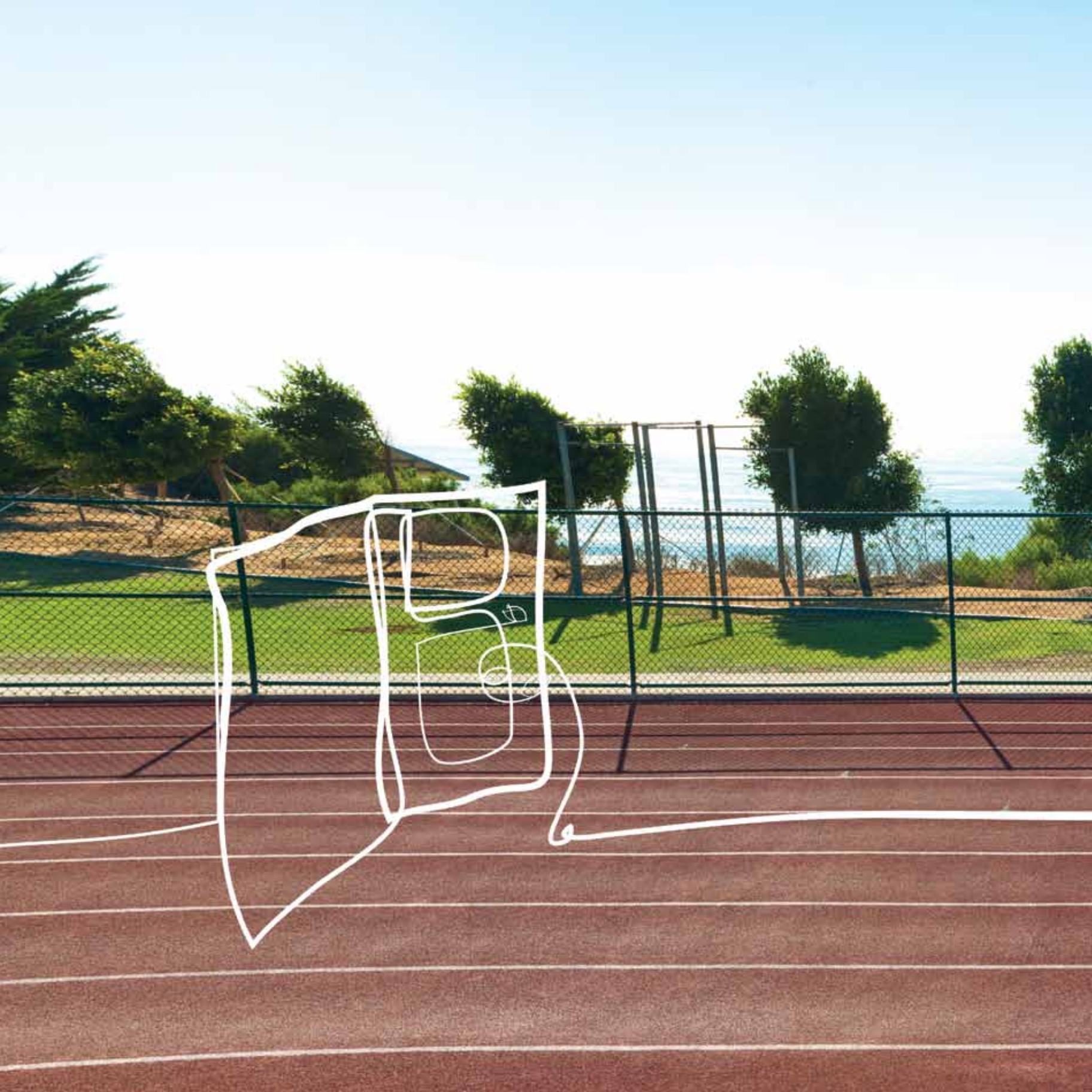


An underwater photograph looking up at the sun. The sun is a bright, glowing orb in the center, creating a lens flare effect. The water is a deep blue-green color, with ripples and bubbles visible. The word "forward" is written in a dark, cursive script across the middle of the image, appearing to be floating or written on the water's surface.

*forward*

**ACADEMICS FAITH COMMUNITY**

POINT LOMA NAZARENE UNIVERSITY ANNUAL REPORT 2010/11



A photograph of three runners (two women and one man) on a red running track. They are running from left to right. The woman in the foreground is wearing a yellow tank top and dark shorts. The woman behind her is wearing a black tank top and pink shorts. The man in the background is wearing a black shirt and black shorts. The track is outdoors, with a chain-link fence and a blue sky in the background.

## *from the* **President**

Dear Friends


At PLNU, we often use the word *Forward* to describe who we are. Here's why. A PLNU education hinges on the interplay of academics, faith, and community because the tasks our students will face in the future will require multiple skill sets. Students will need to engage their hearts and minds in meaningful action. Complex issues in our world require us to balance tradition and today, productivity and social responsibility, individuality and community, and to listen to and learn from people with diverse viewpoints and backgrounds. At PLNU, we value a discourse of ideas that overlap, intertwine, and inform each other. And that is what makes this place so forward thinking.

Inside this annual report, you will meet Cassandra Ham, a current student who understands the value of her intersecting academic, faith, and community experiences. Her story will show you that the students who come out of this place embody the same characteristics as the word *Forward* – they are passionate, inspiring, thoughtful, energetic, and creative.

I hope you are encouraged and inspired by reading Cassandra's story. It represents just one of many stories of students who are transformed by their balanced, forward-thinking education.

If you have questions about anything you read here or if you would like to make a gift, please contact our Office of University Advancement. Thank you for your support of PLNU.

Positively,

A handwritten signature in black ink that reads "Bob Brower".

Bob Brower, Ph.D.  
President





## *Meet Cassandra*

Kassandra Ham meets every experience with a glowing disposition and hopeful fire. But that doesn't mean her life has always been easy.

Kassandra's father was diagnosed with melanoma when she was three. He fought the disease on and off for years, beginning very aggressive treatment during Kassandra's junior year of high school. Her senior year, her father went to the hospital to have fluid taken off his lung. That day, he unexpectedly passed away – two days before Christmas and Kassandra's birthday.

Despite her adversities, Kassandra has chosen to embrace the adventures of college life and move forward with determination and grace.

A straight-A student, Kassandra first came to PLNU for science honors' weekend. She had originally considered PLNU because it would be a short drive home to Laguna Niguel, Calif. She came to science honors' weekend to find out about the value of the mathematics program and to explore the possibility of a scholarship, but she left with much more.

She had felt a strong wave of God's peace after her dad's death on the day she realized he was in heaven and that there, he could be whole again. She didn't feel that peace again until she met with Dr. Greg Crow, PLNU professor of mathematics, on that science honors' weekend, and talked about PLNU's math program. Despite the tough decision of leaving her mother and brother, she decided PLNU was where she wanted and needed to be.

"I got the scholarship, and I was close to my family, but it ended up being about more than just that," Kassandra said.

At PLNU, Kassandra has excelled in her passion for math, and her dynamic combination of intelligence and motivation is what has made her the first person in her family to go to college. And she's taking full advantage of it – shining in the mathematics program, serving with student ministries, and competing on the track and field team. She knows the example she sets is important for her younger brother and for future first-generation college students, including ones who have to make tough decisions to pursue an education.

At PLNU, she has found supportive friends, professors who have served as mentors and encouragers, and a community where she's accepted and challenged.

Kassandra reminds us what PLNU is all about. Our students thrive in a forward-thinking, Christ-centered environment that encourages a unique balance between academics, faith, and community.



ACADEMICS



Kassandra's experience in the Department of Mathematical, Information & Computer Sciences has been more than just informational; it's been **inspiring**.

Some of the people who have influenced Kassandra include faculty members Drs. Greg Crow, Ryan Botts, and **Maria Zack**. Kassandra says Zack has had a particularly strong impact on her, serving as a strong female role model in a field typically dominated by men.

"You feel like you're in the presence of genius when you're around Dr. Zack; she's such a great teacher," says Kassandra. "If I teach, I hope I can be like her."

"I've always loved math," Kassandra says. That passion has been nurtured as she's been given pivotal opportunities to learn and eventually research next to professors.

She talks about her interest (spurred on by Botts) in mathematical modeling, which, among other things, can simulate and even predict how cancer cells attach to healthy cells and how they grow, helping us better understand how to treat the disease.

Discovering so many different aspects of her field of study could be why Kassandra is exploring a wide variety of careers – from mathematical modeling to teaching to becoming an actuary, someone who quantitatively measures risk. Whichever she chooses, she is grateful to have had such a strong academic foundation at PLNU.





**FAITH**



Kassandra has discovered God in new ways while at PLNU. She has gone through difficult times being away from her family, but her struggles have spurred “real conversations with God,” ones where her honesty with her Creator has reaped blessings in her life.



Kassandra has also been moved by seeing Christians serve God in community. She has put her faith to work in Elderly Outreach, one of many student ministries at PLNU.

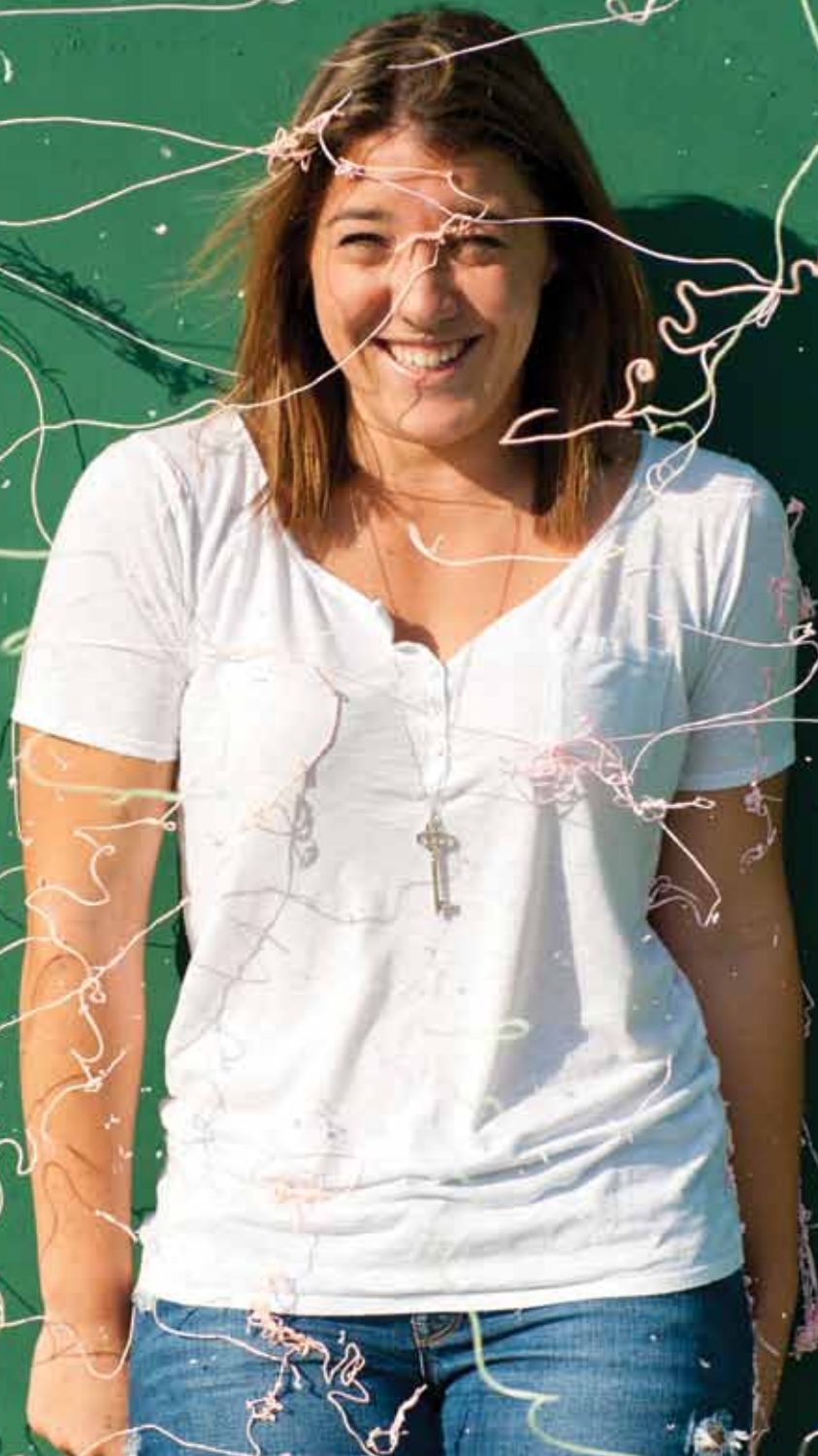
Kassandra has also seen her faith challenged and nurtured not just at church and in ministry, but also with friends and professors who pray for and with her, challenge her to be honest with God, and make an effort to truly live out the calling of the body of Christ.




“Going to chapel, praying before classes, and praying and having weekly devotionals at track practice have kept me close to God especially in such a tough time in my life,” she says. “Hearing fellow students’ testimonies about their lives and sharing my own has made me realize so many things about my life in Christ.”



# COMMUNITY





A tight-knit department, dinner in faculty homes, prayer before class – Kassandra’s major has given her much more than math knowledge. In addition, extracurricular involvement and true friends have made a big difference in the way Kassandra has experienced college life. When it comes to relationships, Kassandra says the friendships she’s made at PLNU are deep and long-lasting – her friends truly invest in each other.

“Here, you really feel like you’re a part of a family,” says Kassandra.

Finding places to plug in at PLNU has turned out to be just what Kassandra needed. When she’s not studying or tutoring in the math learning center lab, she’s training with PLNU’s track and field team where she competes in the 100-meter, 200-meter, and 400-meter, as well as the 4x100 and 4x400 relays. Her freshman year, she got the opportunity to go to nationals as an alternate for the 4x400 relay and was able to run in preliminaries. Being part of an athletic team has taught her how a Christian community can be a blessing even in competition.

In short, Kassandra has experienced growth in her knowledge, faith, and relationships because of the well-rounded, forward-thinking education she has received at PLNU. It’s made all the difference for her.



# YEAR IN REVIEW

## > PLNU HIGHLIGHTS

- > In August 2010, PLNU launched the **Offices of Strengths and Vocation**.
- > The Fermanian School of Business, Fermanian Business & Economic Institute, and title sponsor Solar Turbines hosted the annual **"Dealmakers of the Year"** awards in September 2010. Jim Owens, chairman of Caterpillar, Inc., was the featured guest speaker. Awardees were Father Joe Carroll, president of Father Joe's Villages; AMSOLAR for negotiating financing for 20 megawatts of solar installations on school campuses; and High Tech High for fostering a textbook-free, multi-site educational model.
- > In November 2010, PLNU and Gallup, Inc. co-hosted the first **Strengths on a Faith-Based Campus Conference**.
- > In January 2011, more than 500 volunteers, including students from PLNU, participated in San Diego County's annual **Point in Time Count (PITC)**, a way to count those who are homeless and describe who they are.
- > PLNU's annual **Writer's Symposium by the Sea** was held in February 2011. Visiting writers included Mary Karr, author of *The Liars' Club* and *Lit: A Memoir*; Chris Hilman of the '60s rock band The Byrds; Rob Bell, creator of the Nooma videos and author of the books *Velvet Elvis*, *Sex God*, and others; and Lynn Vincent, collaborative writer of *Same Kind of Different as Me*, *Going Rogue*, and *Heaven Is for Real*.
- > In March 2011, **Dr. Kerry Fulcher** was appointed provost.
- > In April 2011, as part of the 10th annual **San Diego Kyoto Prize Symposium** events, PLNU hosted the Kyoto Prize Laureates on campus for a press conference and luncheon. PLNU was announced as an official co-host university for the Kyoto Prize Symposium, joining San Diego State University, UC San Diego, and the University of San Diego, starting next year.
- > In May 2011, PLNU celebrated the **largest graduating class** in its history with 565 undergraduate and 259 graduate students.

## > STUDENT HIGHLIGHTS

- > In October 2010 and June 2011, PLNU joined volunteer groups from around San Diego as a part of **FaceLift**. Volunteers worked on beautification projects, including lending a hand at a local park and at Wilson Middle School, which has been deeply hit by budget cuts.
- > In November 2010, PLNU music students Christian Sanders, Christen Horne, and Austin Thompson were honored by **Opera Buffs, Inc.**, a nonprofit organization that offers grant money and performance opportunities to both seasoned and emerging opera singers. Thompson also performed in a featured role in Puccini's *Turandot* at San Diego Opera, along with three other PLNU students.
- > Students in the chemistry department worked alongside professors to publish several articles in the past year in the *Journal of Undergraduate Chemistry Research*, the *Journal of Organic Chemistry*, *Trends in Organic Chemistry*, and the *Research Journal of Chemistry and Environment*.
- > The PLNU Speech and Debate Team was ranked the third highest school in the nation at the National Parliamentary Debate Association Nationwide Championship Tournament in March 2011 for the Yearlong Season Sweepstakes.
- > PLNU BSN graduates from May 2011 had a 100 percent pass rate on their national licensing exam.
- > Beginning in May 2011, 116 students, along with eight alumni and 13 faculty and staff members traveled and ministered on **LoveWorks short-term mission trips**. Groups traveled to Australia, Bangladesh, Brazil, the Democratic Republic of the Congo, Ghana, Guatemala, El Salvador, Jamaica, Rwanda, and Ukraine for three weeks each. An additional team spent eight weeks in Asia.
- > Eighteen seniors completed **senior honors projects**.
- > Eric Casallas, who is pursuing a master's in educational leadership at PLNU's Bakersfield Regional Center, was named **Teacher of the Year** in Kern County and was appointed by Gov. Jerry Brown to serve on the California Commission on Teacher Credentialing.



## > FACULTY HIGHLIGHTS

- > Associate professor of art **Dave Adey, M.F.A.**, was selected to feature his work in the 2010 California Biennial at the Orange County Museum of Art (OCMA), an exhibition that “brings together a large cross-section of the state’s most innovative contemporary visual artists,” according to OCMA’s website.
- > **Randy M. Ataide, J.D.**, professor of entrepreneurship and executive director of the Fermanian Business & Economic Institute (FBEI), served as a contributing editor for the book *Entrepreneurial Leaders: Reflections on Faith at Work, vol. V*.
- > At the annual meeting of the Christian Business Faculty Association (CBFA), **Dr. Becky Havens**, professor of economics, was awarded the Richard C. Chewning Award, which is given annually to a member of the CBFA for meritorious service. Havens is currently part of the board of directors and has served as association chair.
- > **Dr. Richard Hill**, professor of writing and literature, won the 2011 San Diego Book Award for an unpublished memoir for his just-completed sabbatical project, *We’re All From Somewhere Else: A Southern California Childhood*.
- > **Dr. Alan Hueth**, professor of communication, was invited to join the board of the San Diego Christian Film Festival.
- > **Dr. Victor Labenske**, professor of music, recently published *Sounds of Philadelphia, Suite for Piano; Sunday Morning Christmas Companion, 33 Favorite Selections for Christmas and Advent; and Generations: Baby Boomers 1950-1963, Advanced Piano* with Alfred Publishing, one of the major educational music publishers.
- > The book *When Love Bends Down: Images of the Christ Who Meets Us Where We Are* by **Dr. Michael Lodahl**, professor of theology and world religions, has recently been translated into Russian and Dutch; additionally, Lodahl’s book *The Story of God* has been translated into Russian, Amharic (Ethiopian), and Japanese.
- > Associate professor of political science **Dr. Lindsey Lupo** has a new book, *Flak Catchers: One Hundred Years of Riot Commission Politics In America*, published by Lexington Books in December 2010.
- > **Dr. Dawne Page**, professor of biology, has been awarded a four-year grant from the National Science Foundation entitled “B Cell Development and Activation in Zebrafish.” This is a joint project between Page and Dr. David Traver at UCSD.
- > Professor of music, **Dr. Keith Pedersen**, was named “Outstanding College/University Music Educator of the Year” by the Southern Border Section of the California Music Education Association.
- > The San Diego Daily Transcript named PLNU’s chief economist, **Dr. Lynn Reaser**, one of San Diego’s Top Influentials for 2011.
- > **Dr. Karen Sangren**, professor of art and design, was honored with the Boeve Art Education Award by Christians in the Visual Arts for her work and leadership on the “2010 National Status Report of Art and Design Programs in Members and Affiliates of the Council for Christian Colleges and Universities.”



# TOTAL GIFTS RECEIVED > \$4,074,093

Unrestricted/  
Church Gifts >  
\$2,105,142

Designated  
Gifts >  
\$1,337,160

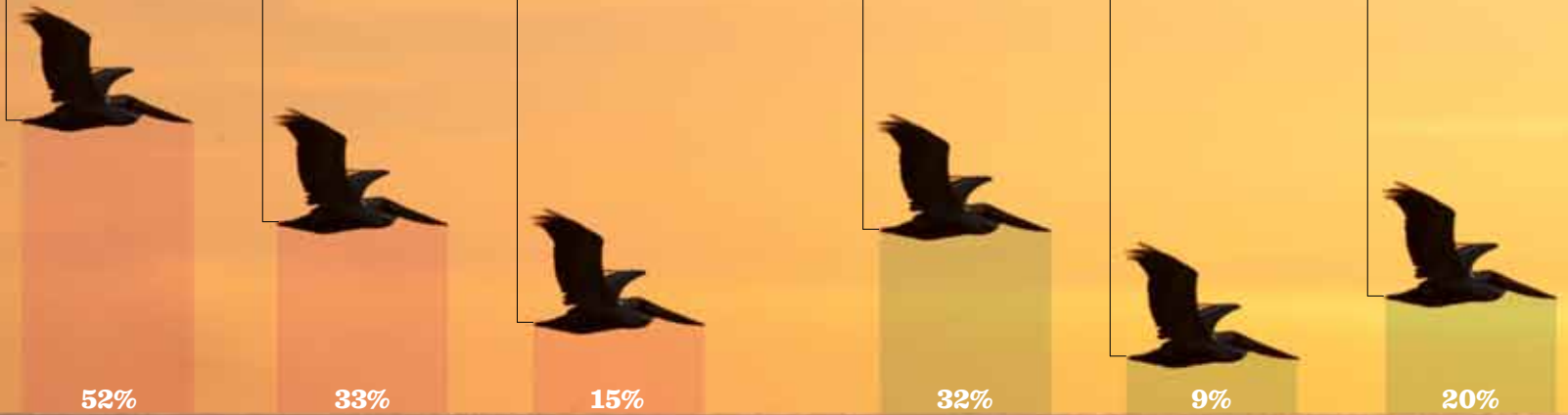
Endowed  
Gifts >  
\$631,791

Instructional  
And Academic  
Support >  
\$29,178,987

Student  
Services >  
\$8,310,707

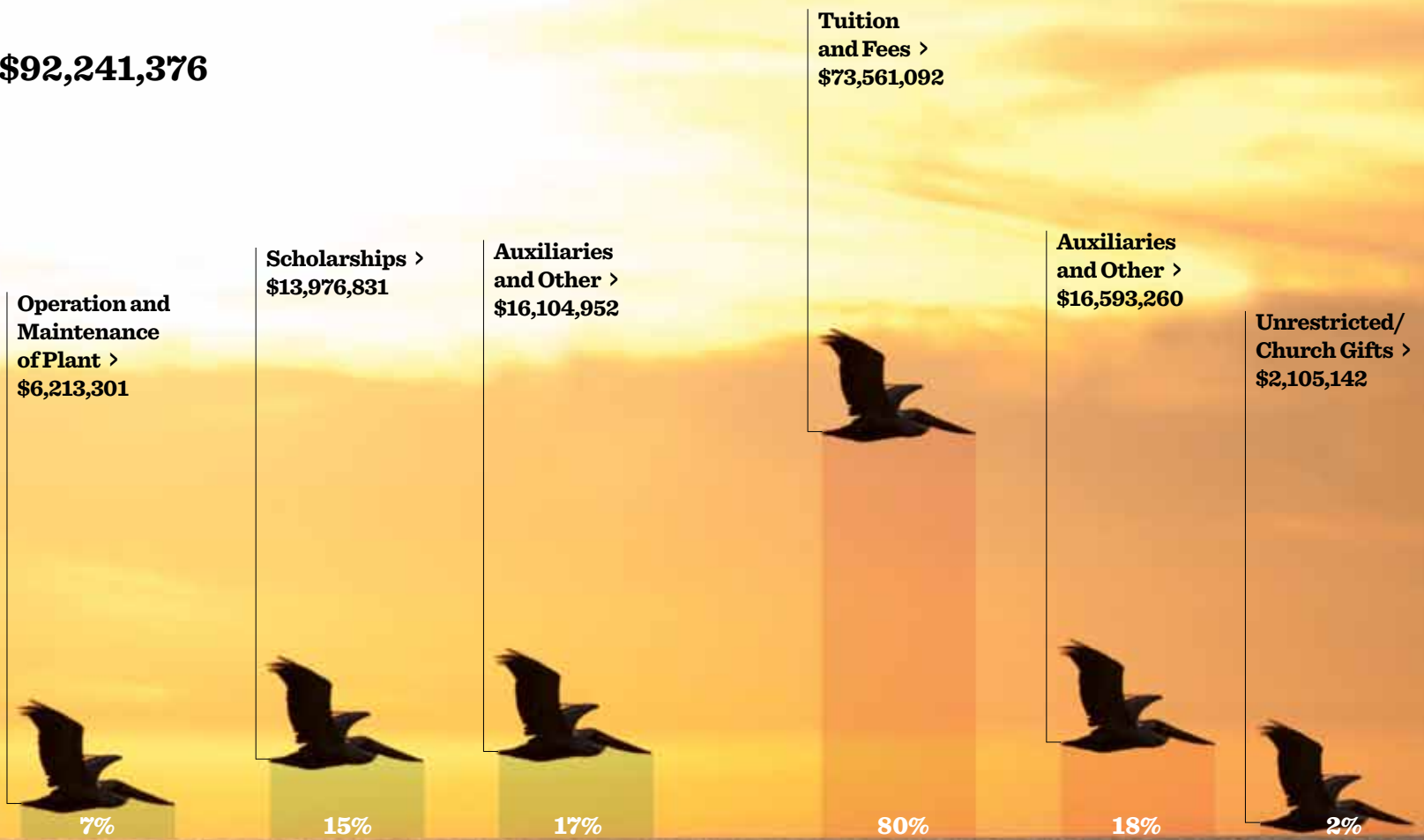
Institutional  
Support >  
\$18,456,598

# OPERATING EXPENSES >



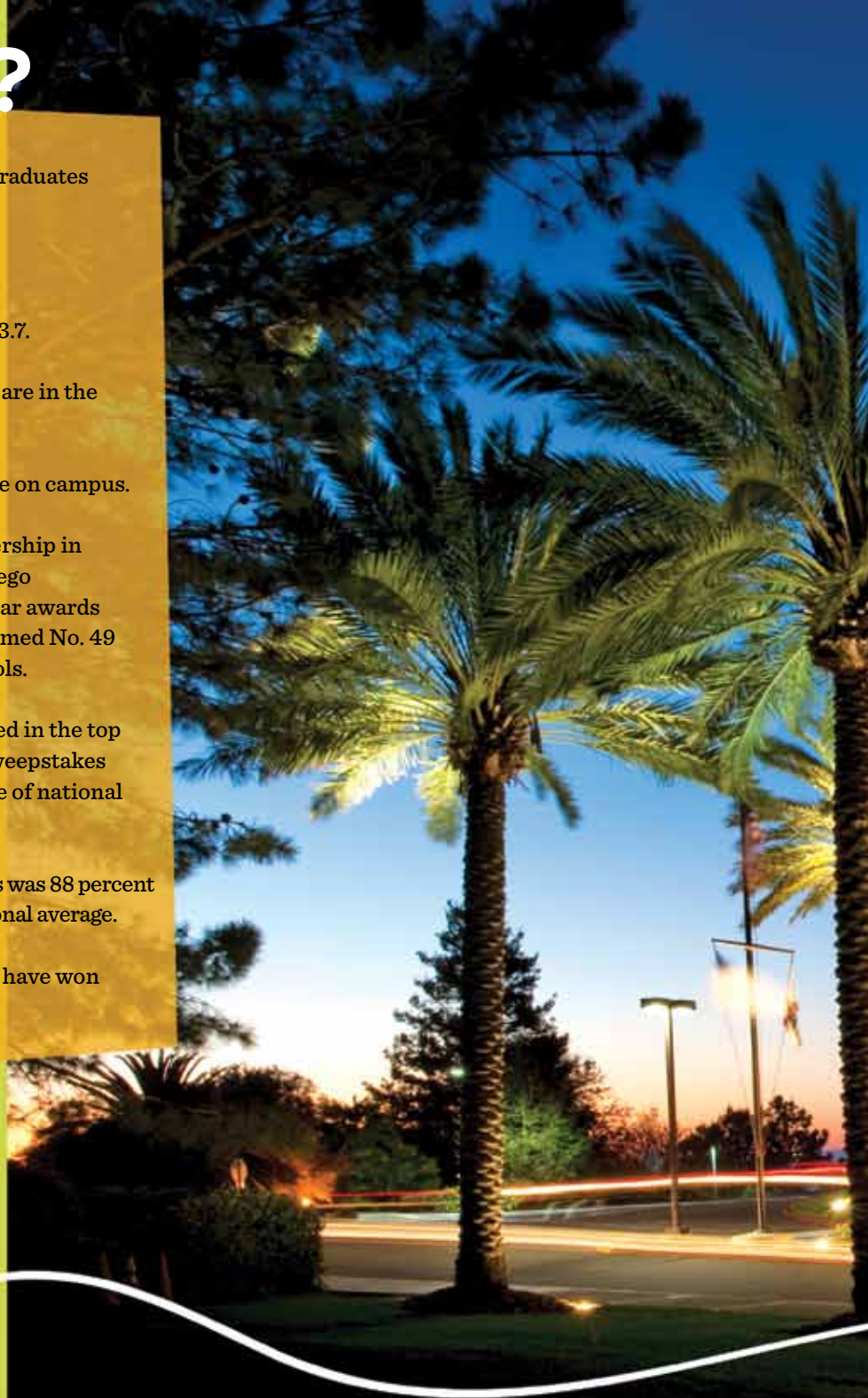
# OPERATING REVENUES > \$92,259,494

**\$92,241,376**



# DID YOU KNOW?

- › PLNU enrolls approximately 2,400 undergraduates and nearly 1,100 graduate students.
- › The student-faculty ratio averages 13:1.
- › Undergraduates' average incoming GPA is 3.7.
- › Thirty-three percent of entering freshmen are in the top 10 percent of their high school classes.
- › Seventy-two percent of undergraduates live on campus.
- › PLNU is nationally recognized for its leadership in the area of sustainability – winning San Diego Environmental Services Recycler of the Year awards five out of the last seven years and being named No. 49 on the list of America's 100 Greenest Schools.
- › PLNU's speech and debate team has finished in the top five in the nation for the NPDA yearlong sweepstakes race 13 of the past 15 years, earning the title of national champion four of the last nine years.
- › PLNU's acceptance rate into medical schools was 88 percent from 2004 to 2011, more than twice the national average.
- › Since 2005, 23 student films/TV programs have won awards or appeared in film festivals.









**POINT LOMA**  
NAZARENE UNIVERSITY

## **EXECUTIVE ADMINISTRATION**

**Bob Brower, Ph.D.**  
President

**Kerry Fulcher, Ph.D.**  
Provost and Chief Academic Officer

**George R. Latter, Jr., M.B.A.**  
Vice President for Finance and Administrative Services

**Mary Paul, D.Min.**  
Vice President for Spiritual Development

**Caye Smith, Psy.D.**  
Vice President for Student Development

**Joseph E. Watkins, III, Ph.D.**  
Vice President for External Relations

**Visit us at [www.pointloma.edu/giving](http://www.pointloma.edu/giving).**



**POINT LOMA**  
NAZARENE UNIVERSITY

3900 Lomaland Drive  
San Diego, California 92106  
(619) 849-2302  
[www.pointloma.edu/giving](http://www.pointloma.edu/giving)