



# SUSTAINING

## A PLNU EDUCATION





\*\*\*\*\*

SUSTAINING A PLNU EDUCATION

*Sustaining our* FINANCES

*Sustaining our* ENROLLMENT

*Sustaining our* ENVIRONMENT

*Sustaining our* SPIRITUAL HERITAGE

*From*

# THE PRESIDENT

Dear Friends:

The global economic situation is at the forefront of many people's minds these days. As generous donors to Point Loma Nazarene University, you should know that scholarship gifts continue to be awarded because of our diversified and long-term endowment strategies.

PLNU is committed to sustaining the university for the long term through sound fiscal policy, responsible stewardship, and faithful decision-making. This past year, the university once again operated in the black. Enrollment at both the undergraduate and graduate levels is good. We continue to budget conservatively and look for strategies to more effectively use the resources we have and reduce costs where possible.

In challenging financial times, we are reminded of the value of preparing leaders and innovators. The value of your investment in PLNU students becomes even clearer as you help prepare Christian thinkers and leaders who will shape the future and confront the challenges facing our world.

The student you'll meet in this year's report, Greta Aramburo, is just one example of the many students you're supporting – they are energetic, thoughtful, motivated, and compassionate. Our students are the reason it is so important to sustain PLNU for the future. Thank you for your financial support of PLNU and its work to prepare students to serve and lead.

Positively,



Bob Brower, President  
Point Loma Nazarene University



Meet

# GRETA ARAMBURO

*People with a zest for life are sometimes described as “lighting up a room.” If that’s the case, then when you meet Greta Aramburo, you had better bring your sunglasses. Greta is enthusiastic about learning, serving, and living life to its fullest. She repeatedly expresses awe and a deep gratitude for all she’s been given, and she wants to give back to God and others, now and for the rest of her life.*

**D**espite her sunny disposition, Greta’s life hasn’t always been easy. She was born in San Diego, Calif., the oldest of six children. When she was 12 years old, her father’s parents passed away, and her family moved to Mexico to help run her grandparents’ business. Her parents set the example of giving back, opening a Christian school in Cabo, Mexico, when they saw the need for Christian education there.

During high school, Greta spent time living in both Mexico and the U.S. Sadly, before her senior year, Greta was met with devastating news: her father had been diagnosed with cancer. Greta considered putting college on hold, but her parents encouraged her to apply to at least one school. The school Greta chose was PLNU. (She’d heard about Point Loma in fourth grade when a church camp counselor wore a PLNU sweatshirt and told her about the university.)

Greta had heard that PLNU was selective, and when she was accepted, there was great joy in the Aramburo house. In addition to her acceptance, the family had her father’s 50th birthday to celebrate.

Soon, though, their celebration turned to grief. Greta’s father passed away two months into her freshman year at PLNU. Emotionally and financially, things were suddenly a lot tougher on Greta and her family. But she persevered.

“I knew how important my education was to my dad, so I knew I had to stay in school,” Greta said.

Staying at Point Loma has turned out to be a tremendous blessing for Greta. She’s found new passions, such as international development and microfinance, and new ways to serve. She’s found new friends, mentors, and a community she loves.

Greta represents what Point Loma Nazarene University is all about. Our students benefit from a Christian education that teaches, shapes, and sends them out to serve and lead. They are the reason the university makes sustainability a priority.





# *Sustaining our* **FINANCES**

Greta attends PLNU with the help of a Diversity Leadership Scholarship. She also makes use of other forms of aid, such as student loans. She's worked at PLNU's Fermanian Business Center and as a public relations intern, as well.

The patchwork approach has helped Greta stay at Point Loma despite her family's financial challenges. Greta is grateful to those who have given to help her be at Point Loma. Those who have invested in Greta and her education have certainly had an impact on her life.

\*\*\*\*\*



In order to support Greta and other students with financial need, PLNU has made a commitment to a financial strategy that involves long-term, diverse investments. This approach has enabled the university to continue funding scholarships and programs during today's challenging financial times. Greta also has access to student loans, in part due to the exemplary repayment rate of PLNU's alumni and students.

Point Loma works hard to be a good steward of resources in all areas. For example, the university recently renovated residence halls to create space for additional students. More students living on campus means increased revenue and an enhanced educational experience for the students who enjoy greater access to campus resources.

The generosity of PLNU's supporters has helped strengthen the university and provide scholarships.



# *Sustaining our* ENROLLMENT

A double major in international development studies and media communications, Greta's energy and passion are evident no matter what subject she's speaking about. While thinking about her future, she exclaimed, "I want to do everything!"

Perhaps her love for PLNU is most evident when talking about its people.

"Seeing a community that serves God together is the most beautiful thing," she said.

Some of the people who have influenced Greta include faculty members Dr. Senyo Adjibolosoo, Rob Gailey, Dr. Mike McKinney, Bob Goff, and Dr. Mike Campbell.

"They've all been so supportive," she said. "I've learned so much from them."



\*\*\*\*\*



Sustaining the Point Loma Nazarene University community is a top priority that starts with sustaining enrollment. Last spring, PLNU's Cabinet anticipated uncertainty in some areas of student loan financing and adopted a more aggressive admissions model. The result was a deeper pool of equally qualified applicants; Greta represents part of the strongest enrollment in PLNU's history with 2,391 undergraduates registered.

In addition, PLNU's graduate enrollment has increased. The MBA program, in particular, is flourishing, as professionals seek to further their education and marketability in a program where ethics and faith are guiding principles.



OFFICE OF  
SHIP &  
EVENT  
ERMAN  
TES



## *Sustaining our* ENVIRONMENT

\*\*\*\*\*

Through her classes and interactions with Professor Rob Gailey, Greta has learned about microfinance, the practice of granting small loans – often as little as \$20 – to people in developing countries. The loans are used, often by women, to start sustainable businesses. Greta is currently serving as the secretary of PLNU's Microfinance Club. The club has received recognition from Kiva, a major microfinance nonprofit organization. Kiva is using PLNU's club as a model for other universities interested in starting similar student organizations.

As an international development studies major and leader of PLNU's Mexico Children's Outreach, Greta has a heart for developing countries and the world's poor. She understands that caring for God's creation is also a commitment to caring for others. Not only do Point Loma's sustainability measures benefit her as a student by keeping her tuition lower, but they have also inspired her to think about business from an angle of sustainable development. In fact, she's interested in pursuing a master's degree on the subject in the future.



In 2007, President Brower signed the American Colleges and Universities Presidents Climate Commitment, pledging to reduce the university's carbon emissions and to teach students about sustainability. Among the university's many "green" efforts are:

- The installation of solar panels on four major campus buildings this year
- An efficient, single-stream recycling program (The 2007 recycling rate was 54 percent.)
- A large-scale food composting program that sends approximately 2 tons of food waste a week to the Miramar greenery
- Water-saving toilets and waterless urinals, installed this year, which will save approximately one million gallons of water a year
- A commitment to constructing all new buildings to LEED silver qualifications
- An irrigation control system and native plants that conserve water
- An agreement with the San Diego Zoo that sends the university's acacia trimmings to feed the zoo's antelopes and giraffes and stalks of giant birds of paradise to feed elephants.

PLNU is often recognized for its environmental stewardship. The university received an Orchid Award for sustainable design this fall and was named a City of San Diego 2008 Recycler of the Year.

# *Sustaining our* SPIRITUAL HERITAGE

Greta has grown spiritually at Point Loma. She's been especially moved by seeing Christians serve God in community.

"I think about how I can be used by God to further His kingdom. I'm just a little vessel, but when you see all these little vessels together, it's really amazing," Greta said.

Greta saw Christians working together on a trip to Armenia she took with LoveWorks, PLNU's short-term missions program. In Armenia, she and other PLNU students joined faculty members Rob Gailey and George Fermanian in constructing inexpensive, durable, earthquake-resistant homes for Armenians in need. The homes were built with concrete-filled polystyrene blocks in a model Greta hopes can be replicated elsewhere and used in sustainable development.

\*\*\*\*\*



Our spiritual heritage is vital to PLNU's identity. Greta and her peers benefit from a rich chapel program, a broad array of student ministries, opportunities for missions, like Greta's LoveWorks trip to Armenia, and the support of dedicated faculty, staff, and administrators.

This year, PLNU completed Smee Hall, the new home of the School of Theology and Christian Ministry, Center for Pastoral Leadership, and Wesleyan Center.

In addition, PLNU hired a new, full-time chaplain this summer. Mark Carter is serving as a spiritual leader and mentor for students, pouring into their spiritual lives and development. Point Loma's graduate program regional centers are placing an increased emphasis on spiritual development in their curriculum, as well.



# July 2007 – June 2008

## YEAR IN REVIEW

### Welcomes & Farewells in Administration



Dr. Jeffrey Carr joined the PLNU community as associate vice president for Student Development in fall 2007.

Dr. Gary Railsback was named the new dean of the School of Education in Jan. 2008.

In June 2008, Dr. David Strawn, dean of the College of Arts and Sciences, retired after 37 years of service at Point Loma. Dr. Kerry Fulcher, previously the chair of the Department of Biology, is the new dean.



Mark Carter became the new university chaplain and director of chaplain ministries in June 2008.

Dr. Mark Mann was named the director of PLNU's Wesleyan Center for 21st Century Studies after Dr. Maxine Walker retired in June 2008.

### Happenings



PLNU's Fermanian School of Business hosted the first of its annual "Dealmakers of the Year" awards on Sept. 28, 2007.



Point Loma hosted its fourth annual Fall Festival on Oct. 13, 2007. Approximately 2,000 people attended.

In response to the October 2007 wildfires in San Diego, PLNU formed the Relief and Response Task Force to develop long-term solutions for disaster response.

The 13th Annual Writer's Symposium by the Sea, held Feb. 4-8, 2008, drew authors Anchee Min, Gay Talese, Philip Yancey, and musician Jon Foreman of Switchfoot.

Award-winning author Greg Mortensen discussed his *New York Times* best-selling book *Three Cups of Tea* at PLNU as part of the annual One Book, One San Diego event on Feb. 18, 2008.



As in 2007, PLNU hosted a press conference and luncheon for the 2008 Kyoto Laureates in March.



Dr. Francis Collins, director of the National Human Genome Research Institute, was the keynote speaker at the PLNU-hosted West Coast Biological Sciences Undergraduate Research Conference held April 11-12, 2008. He also spoke to 1,500 students in chapel.

Also in April, PLNU hosted the first-ever national conference on gender issues in higher education with Dr. Jean Kilbourne as the keynote speaker.



Commencement, held May 10, 2008, recognized 321 graduate and 535 undergraduate students, including 30 honors scholars.

The Department of Mathematical, Information and Computer Sciences hosted Nexus 2008: Relationships Between Architecture and Mathematics, an international conference, from June 23-26, 2008.



In May and June, LoveWorks short-term mission trips involved 132 students, 23 alums, and several faculty and staff members.



Point Loma approved conceptual plans for new science facilities. The concept is displayed on the Campus Mall.

## Campus Accomplishments



PLNU became the first San Diego university to install a large commercial solar photovoltaic system when construction began summer 2007 and was completed in summer 2008.

The biology department added a new major in environmental science in fall 2007.



PLNU was one of the Distinguished Benefactor sponsors of the Dead Sea Scrolls exhibit at the San Diego Natural History Museum in the summer and fall of 2007.

PLNU was named a 2008 Environmental Services Department Recycler of the Year in spring 2008.

In spring 2008, the Department of Mathematical, Information and Computer Sciences received a gift of \$10,000 to help support their undergraduate research program.



PLNU ranked 14th in the nation in the 10-week RecycleMania competition out of 400 participating schools in spring 2008.

Point Loma's Perspectives on Science program, run by the Department of Biology, was selected for the 2008 San Diego Science Alliance Sustainable Program Partnership Award.

Amanda Addie, women's softball player, broke the NAIA record of 174 career stolen bases.



Golfer Sam Cyr won the 2008 NAIA National Championship.

Stephen Miller was named the 2007-08 Student-Entrepreneur of the Year by the Fermanian School of Business and was given a \$2,500 award for his project, "The Cereal Company," on May 1, 2008.

## Administration / Faculty Accomplishments

(In addition to numerous faculty publications and conference presentations)

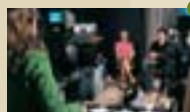


Dr. Bob Brower was honored at the UPLIFTing Citizens of San Diego Tribute & Spirit Awards.

Dr. Sam Powell, professor of theology and religion and dean of the School of Theology and Christian Ministry, was awarded a \$4,000 grant last fall to write a book exploring the dialogue between theology and psychology.



Dr. Dan Croy, professor of business, received the 2007 Regional Wal-Mart Teaching Excellence Award.



Dr. Alan Hueth was one of 20 nationwide faculty members selected to participate in the annual Academy of Television Arts and Sciences Faculty Seminar.



Dr. G. L. Forward was elected to the executive council of the Religious Communication Association.

Dr. David Cummings, professor of biology, was awarded support from the National Oceanic and Atmospheric Association's California Sea Grant to study antibiotic resistance in the Tijuana River Estuary.

## Smee Hall Campaign



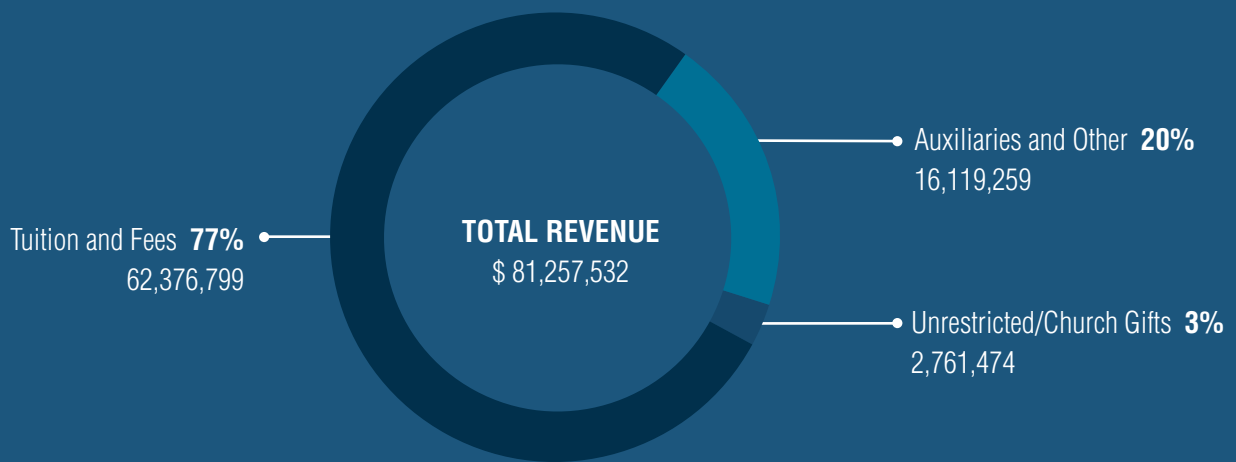
Smee Hall, the new home of the School of Theology and Christian Ministry, Center for Pastoral Leadership, and Wesleyan Center, was dedicated in November 2008. The construction of the building was made possible through gifts from Gary and Debbie Smee, the James L. Stamps Foundation, the Find Us Faithful Foundation, and many individuals and churches.

# FINANCIAL SUMMARY

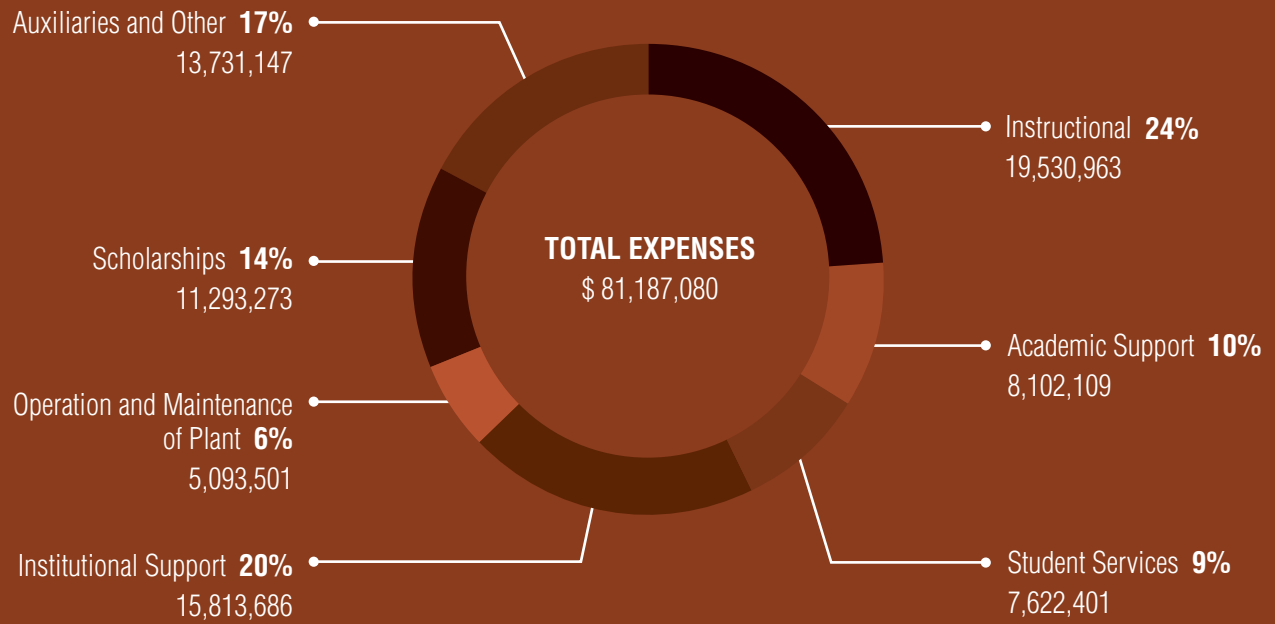
## TOTAL GIFTS RECEIVED



## OPERATING REVENUE



## OPERATING EXPENSES



## MISSION

Point Loma Nazarene University exists to provide higher education in a vital Christian community where minds are engaged and challenged, character is modeled and formed, and service becomes an expression of faith. Being of Wesleyan heritage, we aspire to be a learning community where grace is foundational, truth is pursued, and holiness is a way of life.

\*\*\*\*\*

## VISION STATEMENT

Point Loma Nazarene University will be a nationally prominent Christian university and a leading Wesleyan voice in higher education and the church – known for excellence in academic preparation, wholeness in personal development, and faithfulness to mission.

## CORE VALUES

- Excellence in teaching and learning
- An intentionally Christian community
- Faithfulness to our Nazarene heritage and a Wesleyan theological tradition
- The development of each student as a whole person
- A global perspective and experience
- Ethnic and cultural diversity
- The stewardship of resources
- Service as an expression of faith





## **Executive Administration**

Bob Brower, Ph.D.  
*President*

Mary Paul, D.Min.  
*Vice President for Spiritual Development*

John W. Hawthorne, Ph.D.  
*Provost and Chief Academic Officer*

Caye Smith, Psy.D.  
*Vice President for Student Development*

George R. Latter Jr., M.B.A.  
*Vice President for Finance and  
Administrative Services*

Joseph E. Watkins III, Ph.D.  
*Vice President for External Relations*

For information about giving opportunities, contact the Office of University Advancement at (619) 849-2370 or [giving@pointloma.edu](mailto:giving@pointloma.edu). Visit us at [www.pointloma.edu](http://www.pointloma.edu).





**POINT LOMA**  
NAZARENE UNIVERSITY

3900 Lomaland Drive, San Diego, CA 92106 • (619) 849-2200 • [www.pointloma.edu](http://www.pointloma.edu)

